

VocoPro Viper-II Professional Digital Karaoke System

QUICK START

Quick Reference Setup Guide

This quick reference guide is provided to help you set up your new VIPER-II for the first time. It covers connectivity instructions for components shipped with the system only. When completed, you will have a full-function working Digital Karaoke System. If you have pre-existing gear that will require installation, refer to the appropriate manual for detailed instructions.

Gathering Package Contents

The first step to putting together your new Viper-II is unpacking all the necessary equipment. Remember to keep your manuals nearby when setting up, as you may need to reference them. For safe shipment, we enclosed the smaller components in the road case, so make sure to look there. In the road case and in the other boxes, you should find the items listed below:

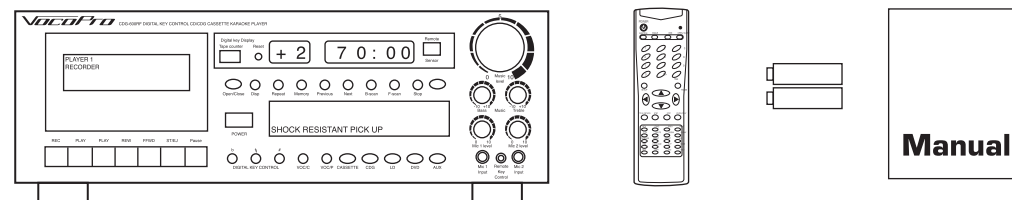
1. CDG-500RF/Cassette Karaoke Player

CDG-500RF

Remote Control

Batteries

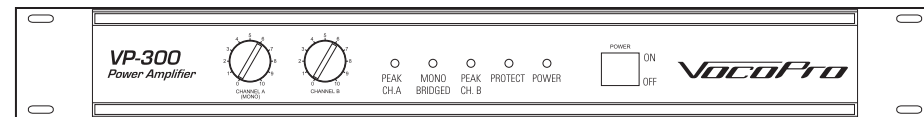
- CDG-500RF
- Remote Control
- Batteries
- Instruction Manual



2. VP-300Pro Power Amplifier

VP-300Pro Power Amplifier

- VP-300Pro



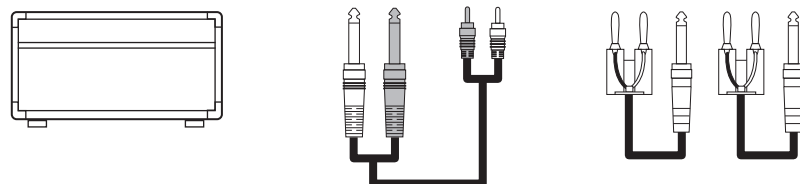
3. Road Case

Viper-II Road Case

Paired RCA to 1/4" Audio Cable

MDP to 1/4" Speaker Cables

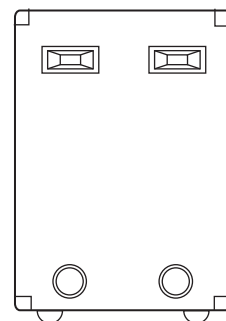
- VIPER-II Road Case
- Paired RCA to 1/4" Audio Cable
- 2 MDP (banana plug) to 1/4" Speaker Cables



4. Dual 15" Speaker Cabinet

VX-30

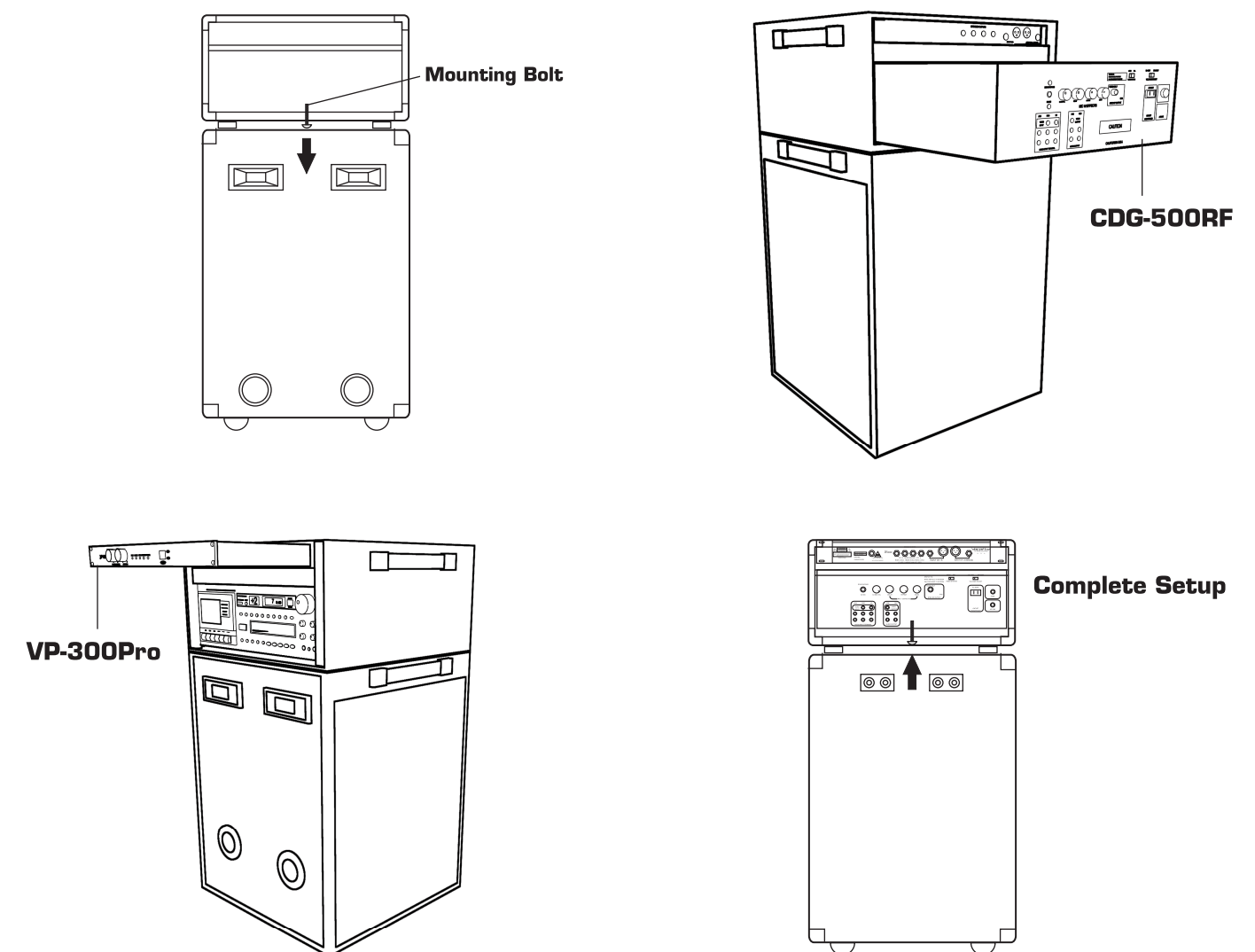
- VX-30



Mounting the Components

When mounting, it can be helpful to have another person assisting to prevent accident or injury. **Follow instructions below:**

- Fully unscrew the mounting bolt located at the back of the VIPER-II road case and reserve.
- CDG-500RF – From the rear of the VIPER-II road case, slide the CDG-500RF into the lower rack-space with the front panel facing forward. Ensure that the front-panel of the CDG-500RF is positioned completely to the front of the rack-space. Once aligned, secure the CDG-500RF by re-inserting the mounting bolt and tightening it so it locks the CDG-500RF in place.
- VP-300Pro – From the front of the VIPER-II road case, slide the VP-300Pro into the upper rack-space rear panel first. Align the holes on the mounting ears of the VP-300Pro with the mounting holes on the rack case. Once aligned, secure the VP-300Pro by inserting and tightening the mounting screws in place.



Connecting the VIPER-II's Components

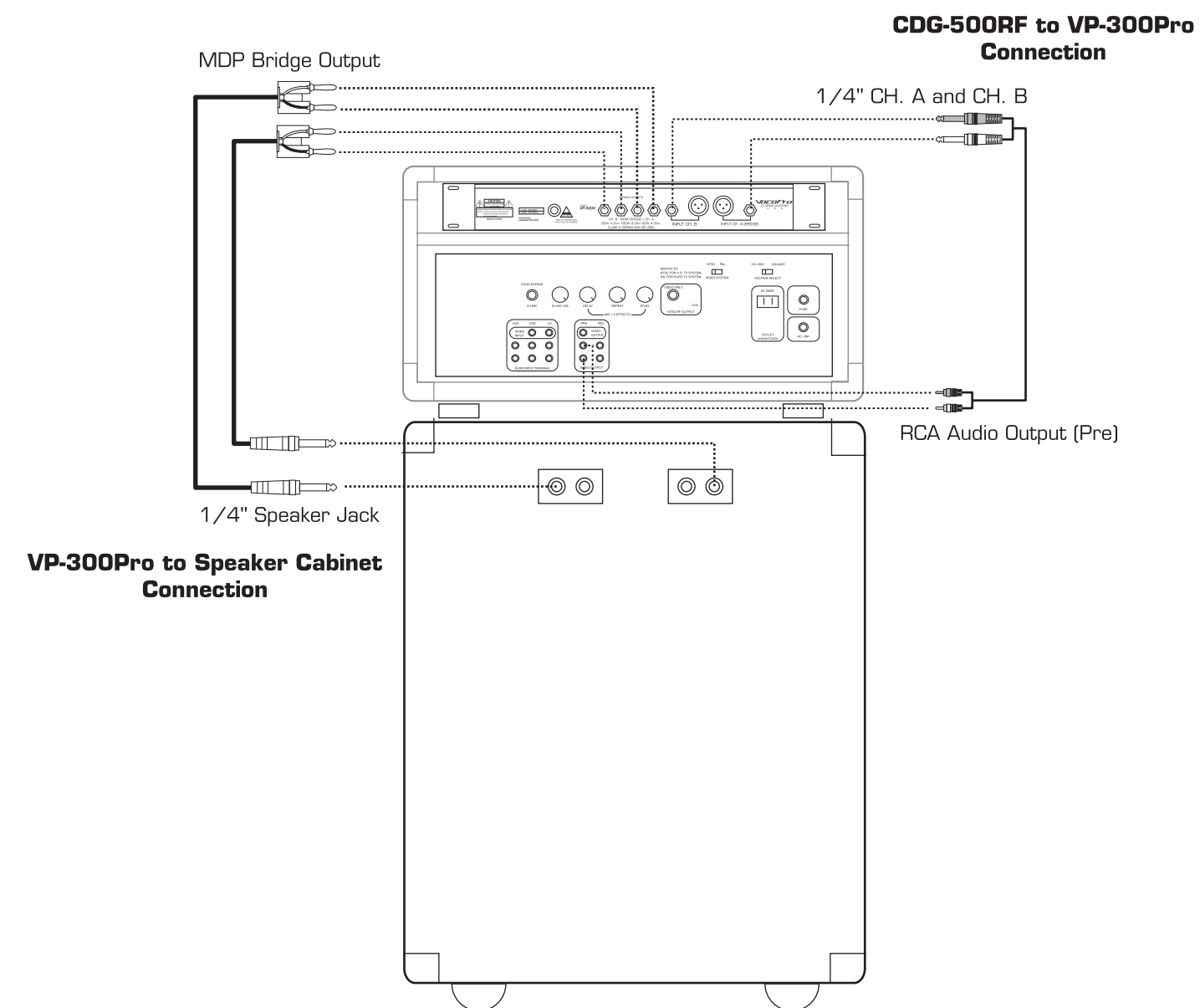
For any questions during the VIPER-II setup, just remember the basic signal path. The signal starts at the player or "source" and is sent to the amplifier/mixer. The amplifier/mixer in turn sends it to your speakers. That's it! All you need to do is connect your devices in that order as shown below:

1. CDG-500RF to VP-300Pro

- a) AUDIO OUT to AUDIO IN – With the paired RCA to 1/4" audio cable, connect the paired RCA plugs to the PRE- OUT jacks on the rear panel of the CDG-500RF. Connect the 1/4" plugs to the CH. A and CH. B inputs on the rear panel of the VP-300Pro.

2. VP-300Pro to Speaker Cabinet

- a) AUDIO OUT to SPEAKERS – Locate the two MDP (banana clip) to 1/4" speaker cables. Connect the MDP plug of one cable to the CH. A binding post on the rear of the VP-300Pro and connect the 1/4" end to a 1/4" speaker jack on the speaker cabinet. **Be sure to notice color coding of interior wire on banana plugs.** Repeat step for the CH. B connection to speaker cabinet using the remaining speaker cable.

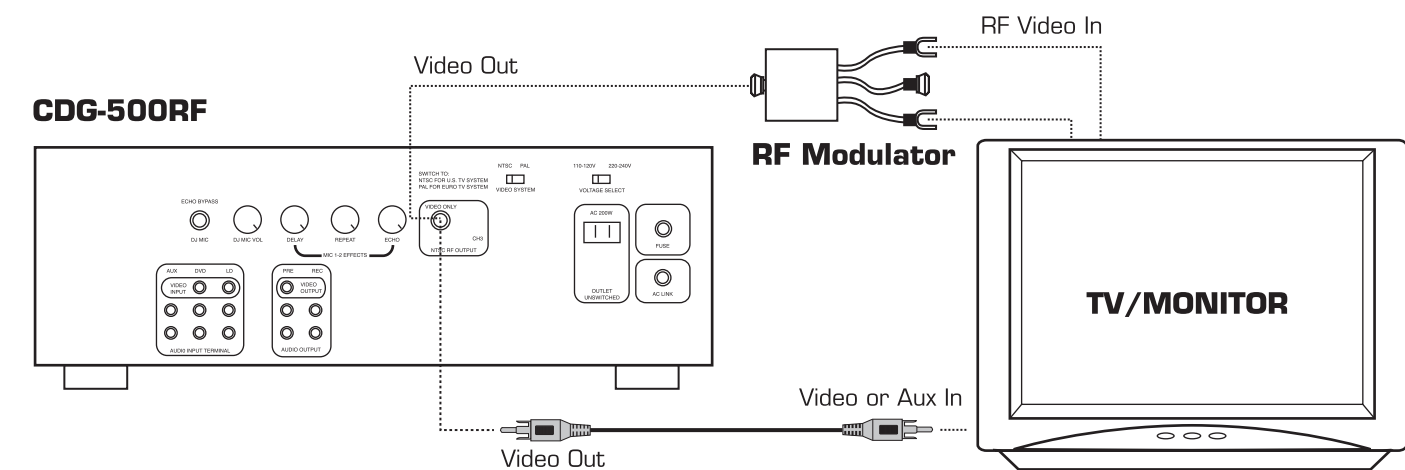


Connecting to a Display Device

To get video output to a TV or monitor device, follow the steps below. Doing so will require an additional RCA cable.

1. VP-300Pro to a Video Display

- a) Connect one end of an RCA video cable to the VIDEO OUT jack on the CDG-500RF and connect the other end to a VIDEO IN jack on your television or monitor device. Some TV's will require that you manually switch the TV to the VIDEO INPUT mode. Other TV's will automatically switch to the video mode when they detect a video signal at the video-input jack. On most TV's the jack is labeled AUX or VIDEO.
- b) If the TV does not have a VIDEO INPUT jack, you may connect a coaxial cable to an RF modulator and connect the other end to your TV's ANTENNA INPUT jack.



Powering On Test

Now that all the components are housed and connected it's time to turn it all on!

- 1. Turning On Power** - Plug in all AC cords to AC outlets. Before turning on power, make sure the MASTER VOLUME on the CDG-500RF is set to an appropriate testing level and ensure the INPUT GAIN controls on the VP-300Pro are set to at least 50%.
- 2. Testing a Mic Channel** – First set MIC VOLUME for that channel to an appropriate testing level. Turn MIC on and speak into it. You should hear yourself clearly.
- 3. Testing a Line Channel** – First make sure the source toggle is set to channel that has the player connected to it. Place a CD/CDG in the CD Deck. Hit 'PLAY'. You should hear the CD playing.
- 4. Testing Video** – With a CD+G still in the CD Deck, turn on TV display and set to video channel. Hit 'PLAY' on Deck. You should see video start to play on TV display.

Please refer to individual manuals for detailed instructions, connectivity options and troubleshooting.

You are now ready to perform like a PRO!!